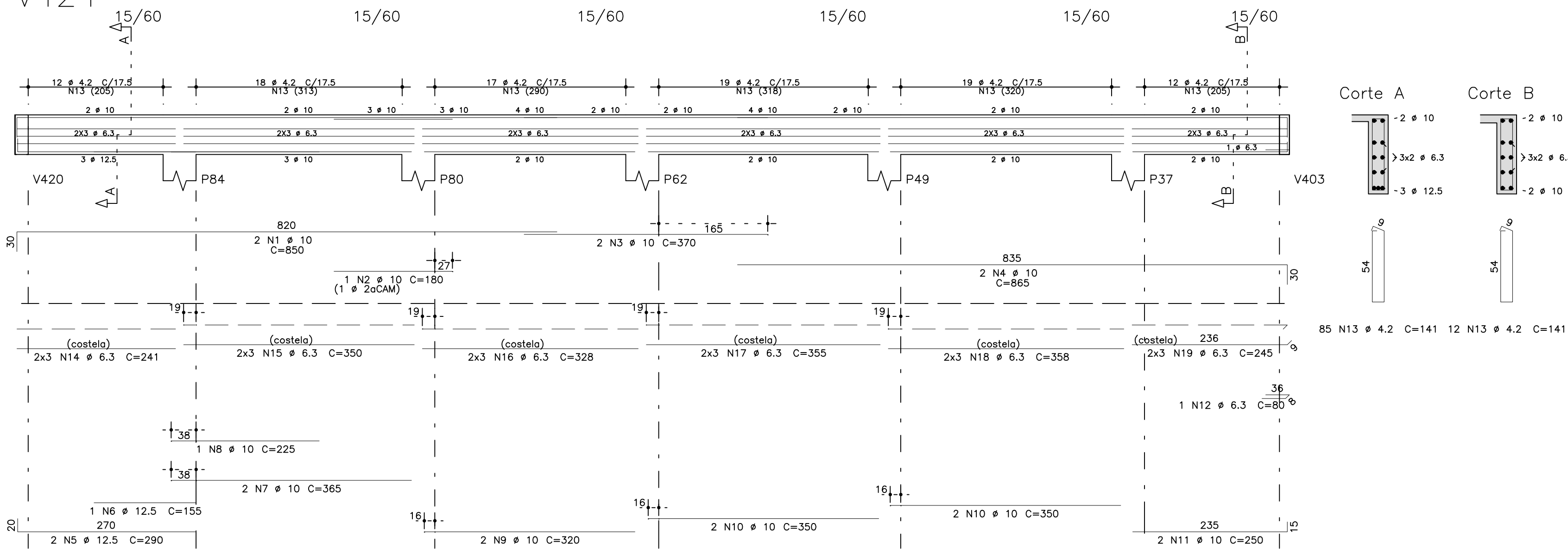
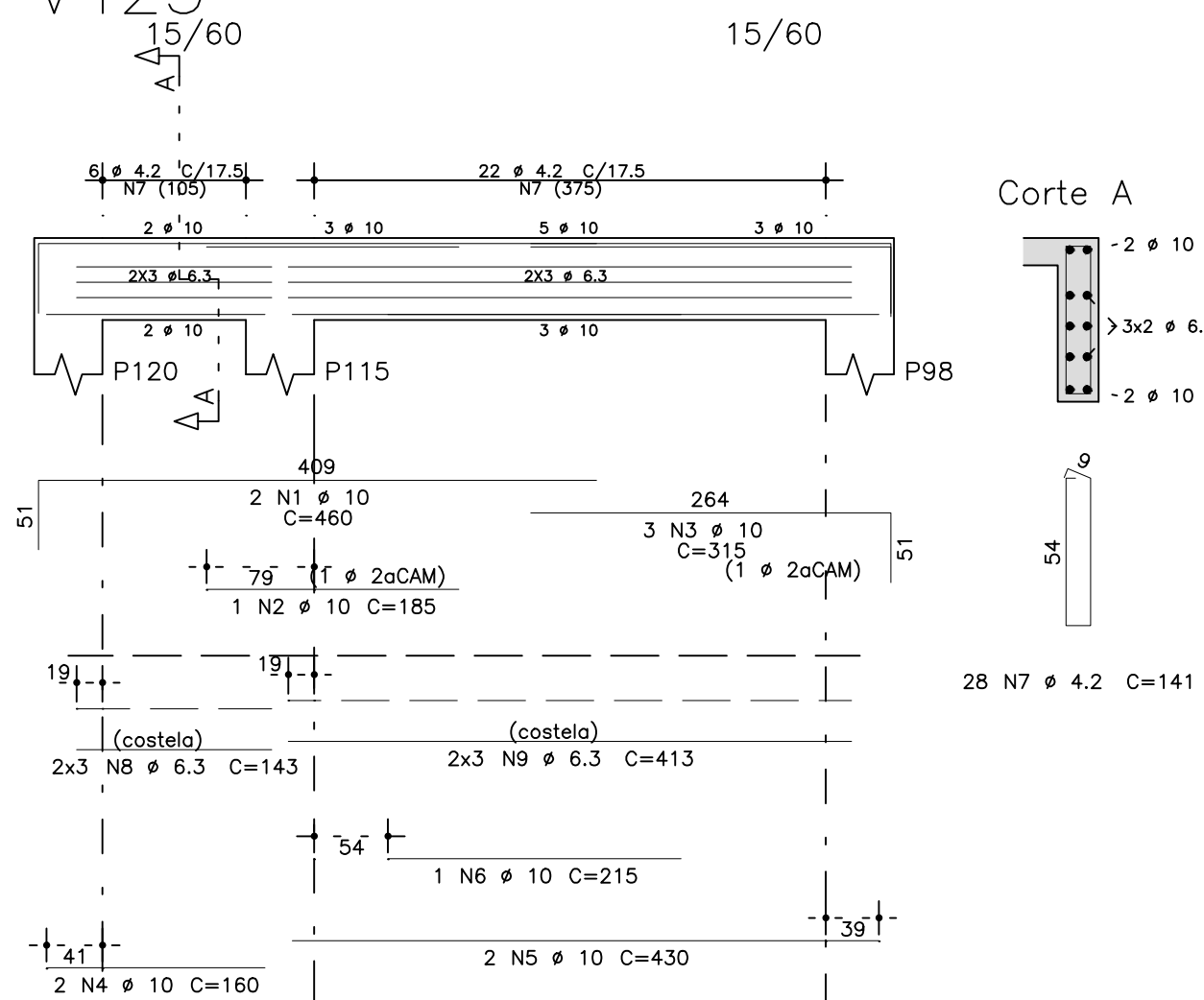


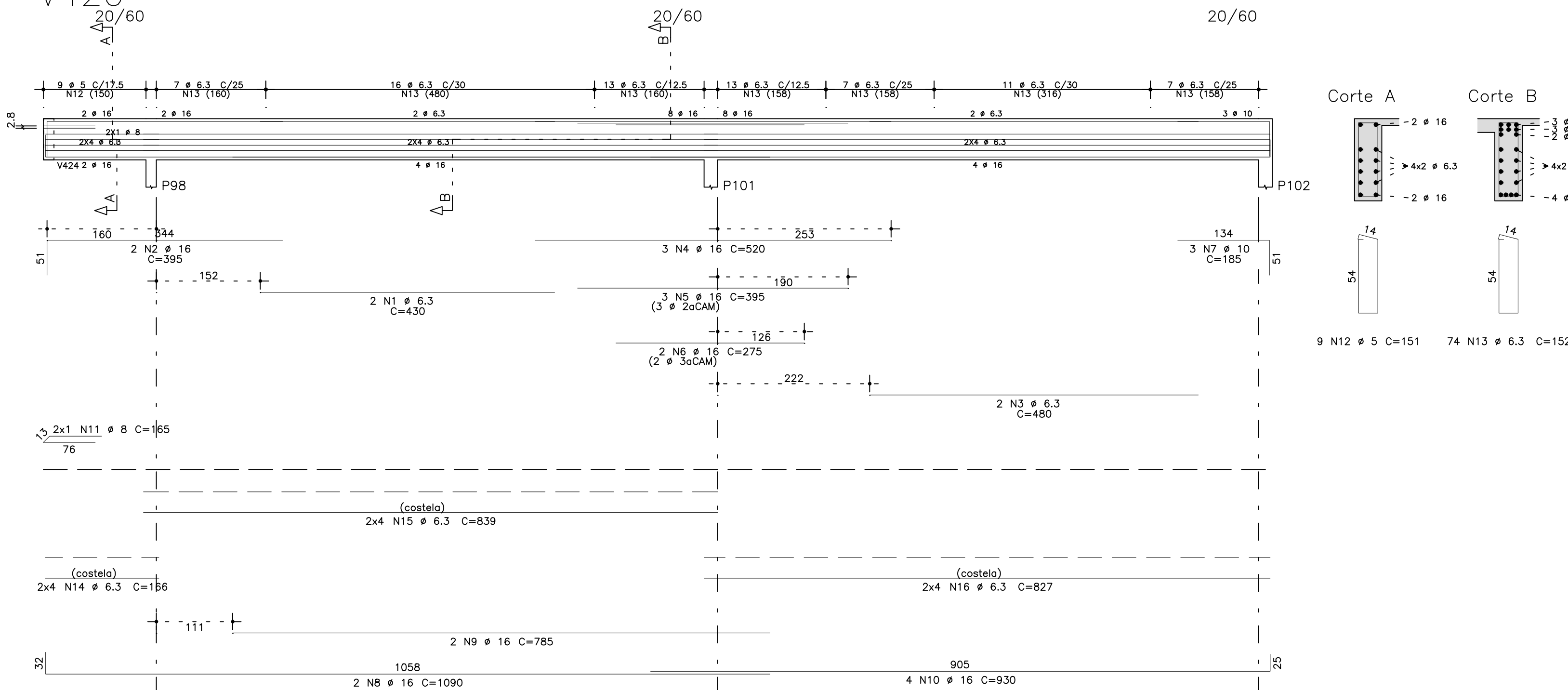
V424



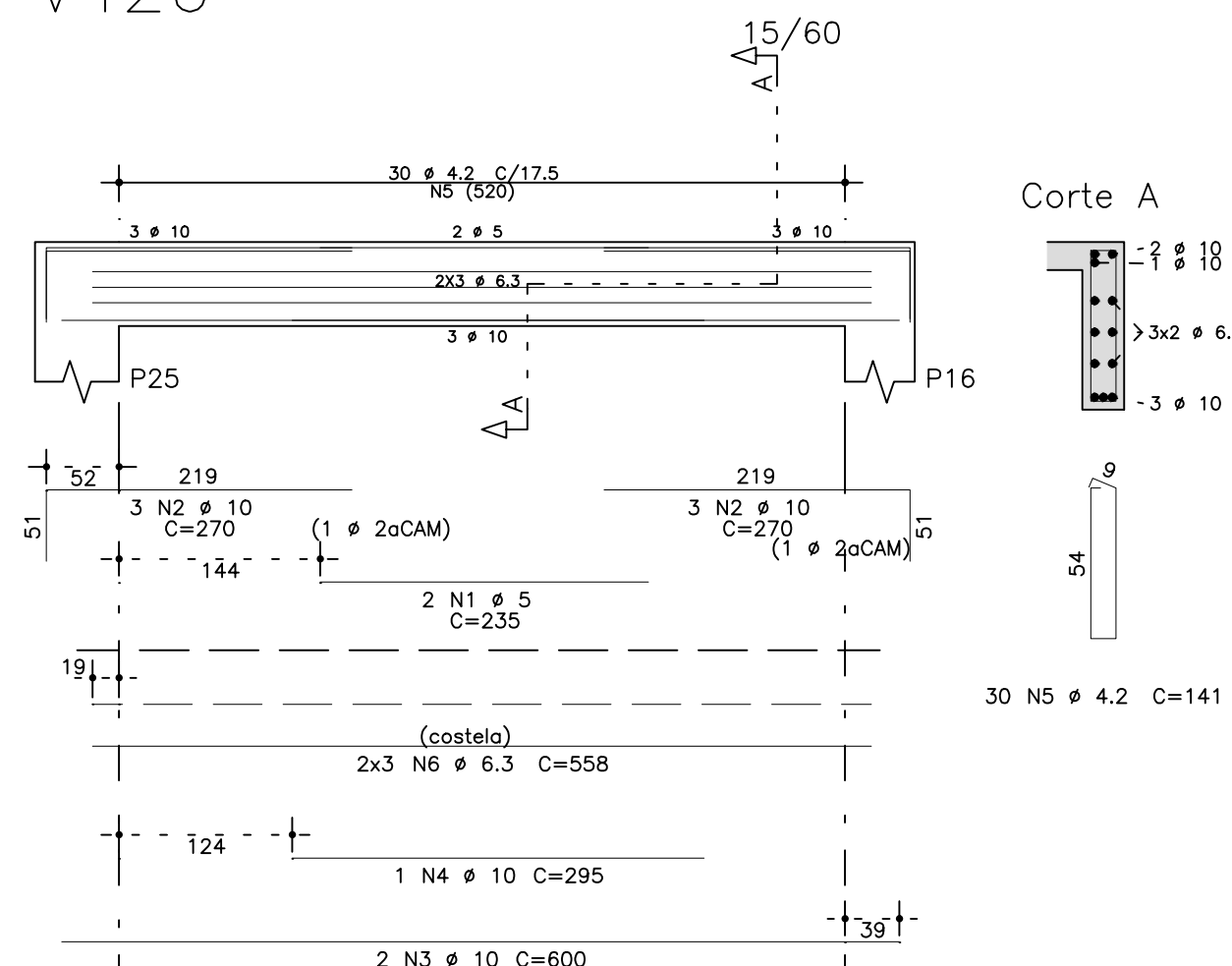
V425



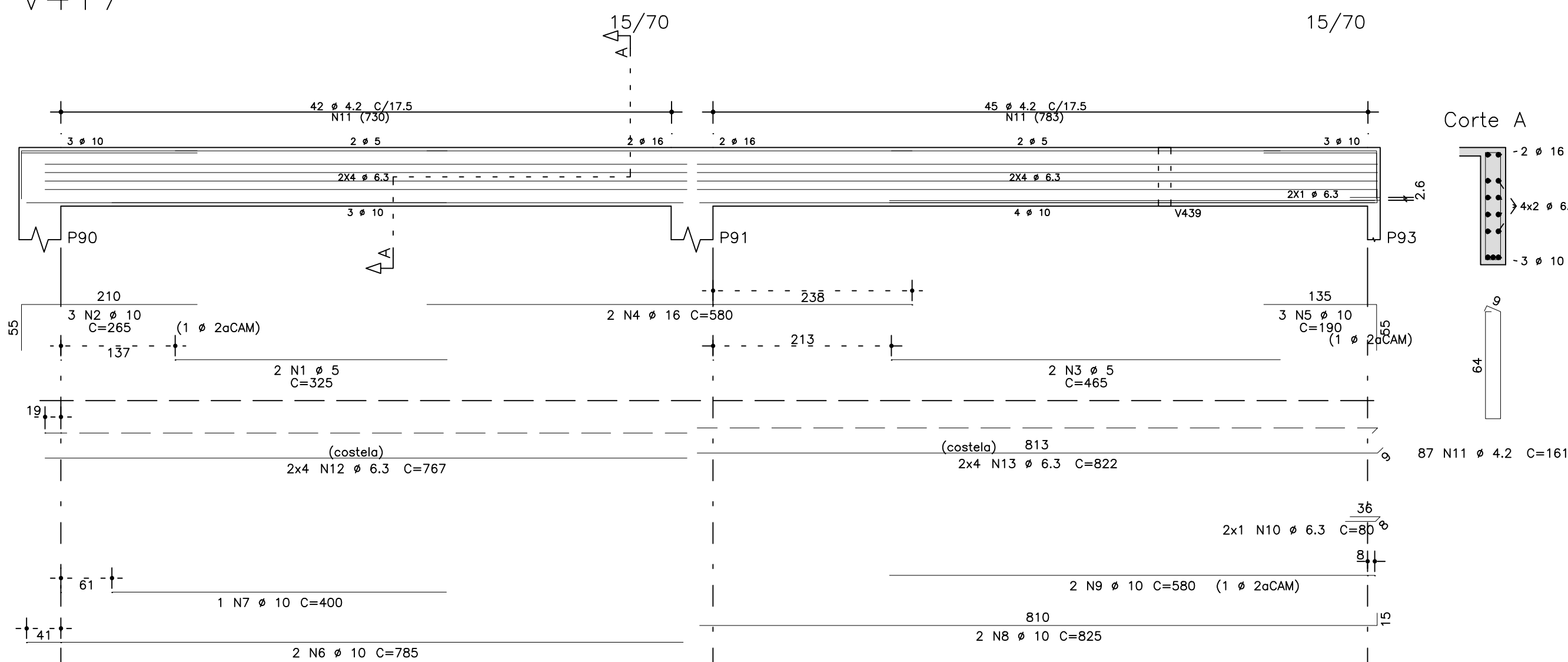
V420



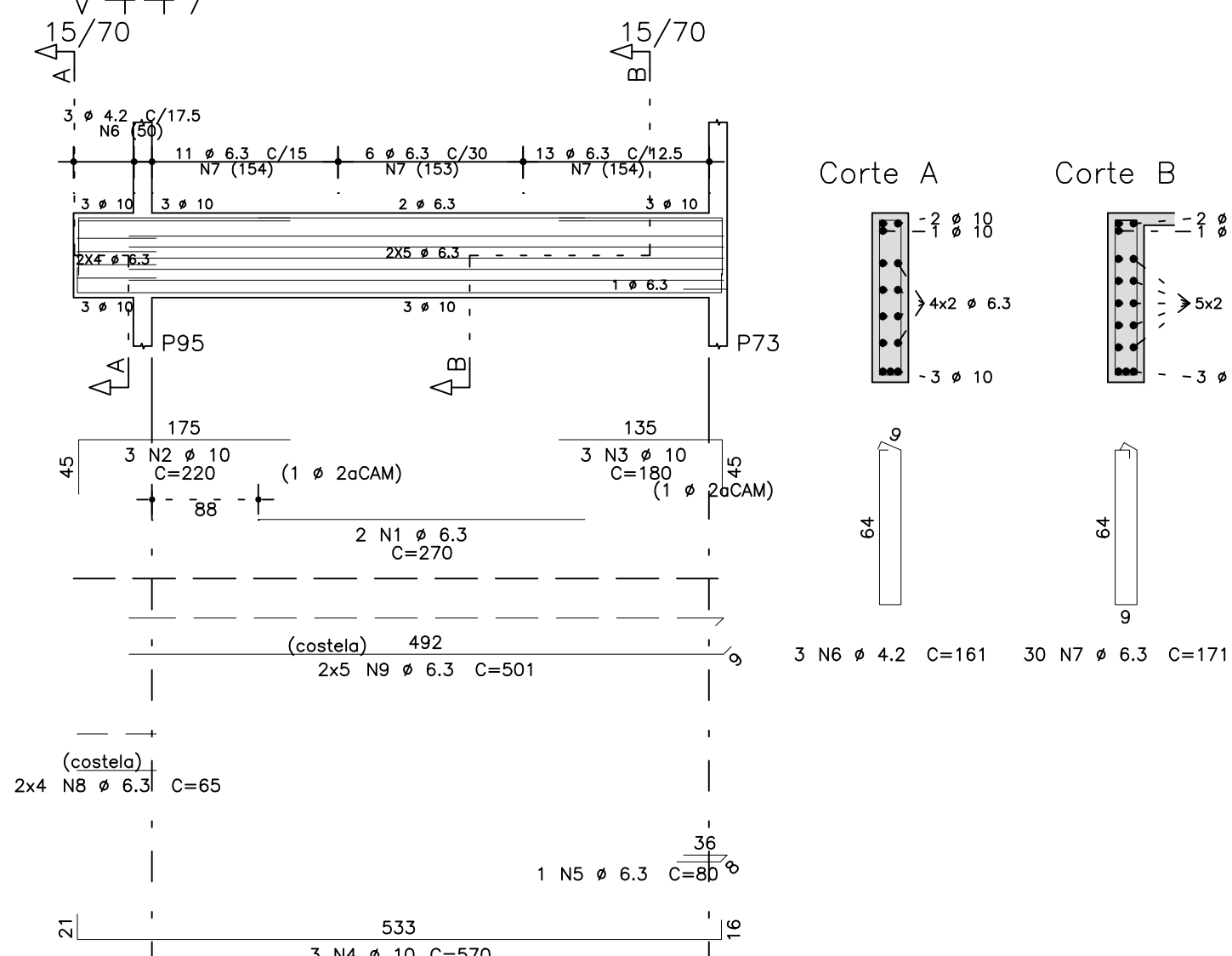
V426



V417



V447



	AÇO	POS	BIT (mm)	QUANT	COMPRIMENTO	
					UNIT (cm)	TOTAL (cm)
V417	60B	1	5	2	325	650
	50A	2	10	3	265	795
	60B	3	5	2	465	930
	50A	4	16	2	580	1160
	50A	5	10	3	190	570
	50A	6	10	2	785	1570
	50A	7	10	1	400	400
	50A	8	10	2	825	1650
	50A	9	10	2	580	1160
	50A	10	6.3	2	80	160
	60B	11	4.2	87	161	14007
	50A	12	6.3	8	767	6136
	50A	13	6.3	8	822	6576
V420	50A	1	6.3	2	430	860
	50A	2	16	2	395	790
	50A	3	6.3	2	480	960
	50A	4	16	3	520	1560
	50A	5	16	3	395	1185
	50A	6	16	2	275	550
	50A	7	10	3	185	555
	50A	8	16	2	1090	2180
	50A	9	16	2	785	1570
	50A	10	16	4	930	3720
	50A	11	8	2	165	330
	60B	12	5	9	151	1359
	50A	13	6.3	74	152	11248
	50A	14	6.3	8	839	6712
	50A	15	6.3	8	839	6712
	50A	16	6.3	8	827	6616
V424	50A	1	10	2	850	1700
	50A	2	10	1	180	180
	50A	3	10	2	370	740
	50A	4	10	2	865	1730
	50A	5	12.5	2	290	580
	50A	6	12.5	1	155	155
	50A	7	10	2	365	730
	50A	8	10	1	225	225
	50A	9	10	2	320	640
	50A	10	10	4	350	1400
	50A	11	10	2	250	500
	50A	12	6.3	1	80	80
	60B	13	4.2	97	141	13677
	50A	14	6.3	6	241	1446
	50A	15	6.3	6	350	2100
	50A	16	6.3	6	328	1968
	50A	17	6.3	6	355	2130
	50A	18	6.3	6	358	2148
	50A	19	6.3	6	245	1470
V425	50A	1	10	2	460	920
	50A	2	10	1	185	185
	50A	3	10	3	315	945
	50A	4	10	2	160	320
	50A	5	10	2	430	860
	50A	6	10	1	215	215
	60B	7	4.2	28	141	3948
	50A	8	6.3	6	143	858
	50A	9	6.3	6	413	2478
V426	60B	1	5	2	235	470
	50A	2	10	6	270	1620
	50A	3	10	2	600	1200
	50A	4	10	1	295	295
	60B	5	4.2	30	141	4230
	50A	6	6.3	6	558	3348
V447	50A	1	6.3	2	270	540
	50A	2	10	3	220	660
	50A	3	10	3	180	540
	50A	4	10	3	570	1710
	50A	5	6.3	1	80	80
	60B	6	4.2	3	161	483
	50A	7	6.3	30	171	5130
	50A	8	6.3	8	65	520
	50A	9	6.3	10	501	5010

RESUMO AÇO CA 50-60			
AÇO	BIT (mm)	COMPR (m)	PESO (kg)
60B	4.2	363	40
60B	5	34	5
50A	6.3	699	171
50A	8	3	1
50A	10	240	148
50A	12.5	7	7
50A	16	127	201
Peso Total 60B =			45 kg
Peso Total 50A =			528 kg

fck 250. kg/cm2

<b>S</b> Schuring & Schuring		<b>Schuring &amp; Schuring Ltda.</b> Escritório Técnico B.E.SCHURING - Projetos de Engenharia Av. XV de Novembro, 489 - Porto 2o. Andar - Cuiabá MT Fone:(065) 321.8999 - Fax:(065) 623.5066 - E-mail - schuring@terra.com.br	
PROJETO:	PROPRIETÁRIO: PREFEITURA MUNICIPAL VARZEA GRANDE MT	OBRA: EMEB ALINO FERREIRA MAGALHAES	
	RESP. TEC. EXECUCÃO:	END.: AV. Verdão eq. c/ Rua "B" PARQUE DO LAGO - VARZEA GRANDE	
AUTORES DO PROJETO:		ASSUNTO: DET VIGA COBERTURA	
Benedito Eliseu Schuring Eng.Civil- CREA 715/D-MT		PEÇAS DETALHADAS V417 / V420 / V424 / V425 / V426 / V447	
Andre Luiz Schuring Eng.Civil- CREA 8697/D-MT		FECH: 250 ESCALA: 1:50	VERIFICAR MEDIDAS NA OBRA ARQUIVO: DATA: FOLHA No. 49